



Protecting Inventions: from Disclosure to Patent

Rhonda Kivlin

Manager, Intellectual Property and Compliance

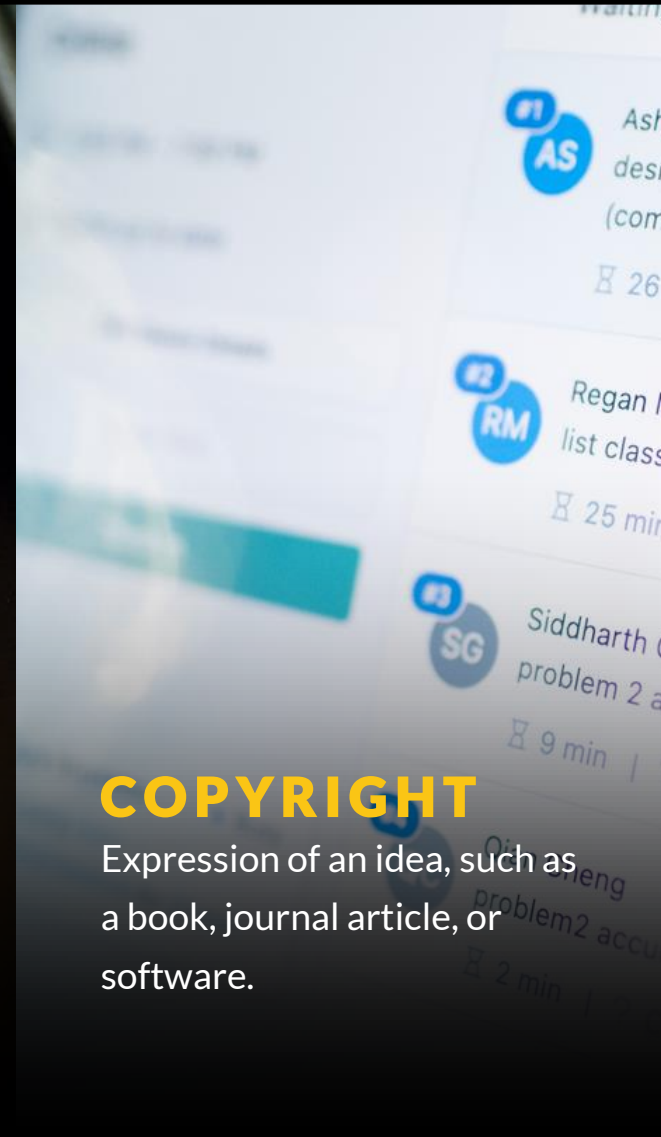
WHAT IS INTELLECTUAL PROPERTY (IP)?



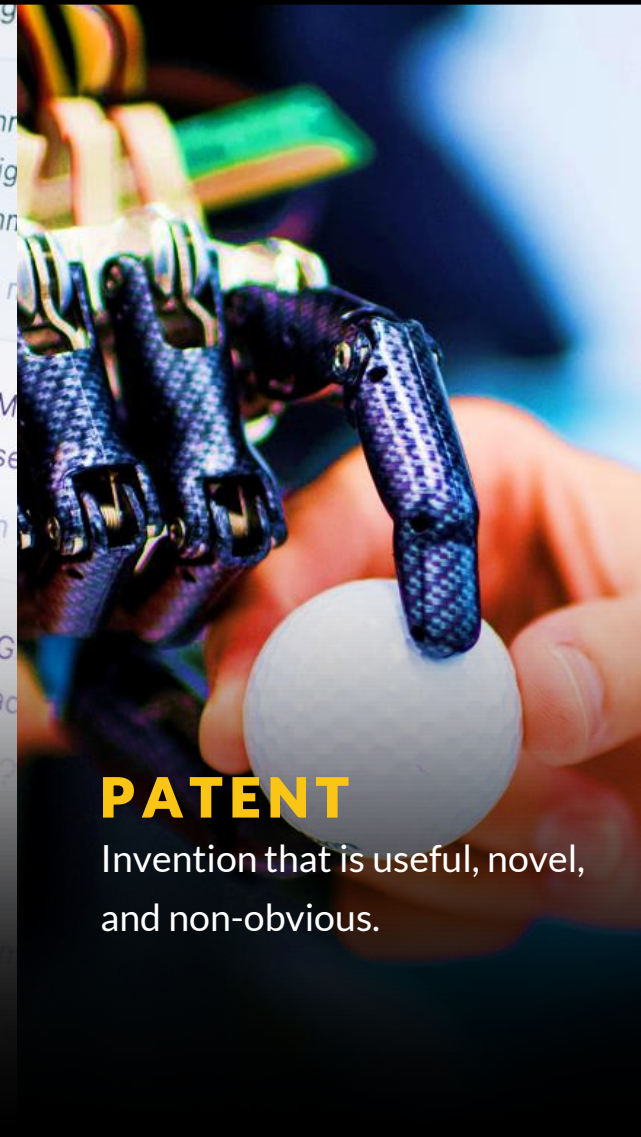
TRADE SECRET
Formulas, practices, processes, designs, instruments, patterns, etc.



TRADEMARK
Brand, symbol, or words that represent a company or product.



COPYRIGHT
Expression of an idea, such as a book, journal article, or software.



PATENT
Invention that is useful, novel, and non-obvious.

INTELLECTUAL PROPERTY ADDS VALUE

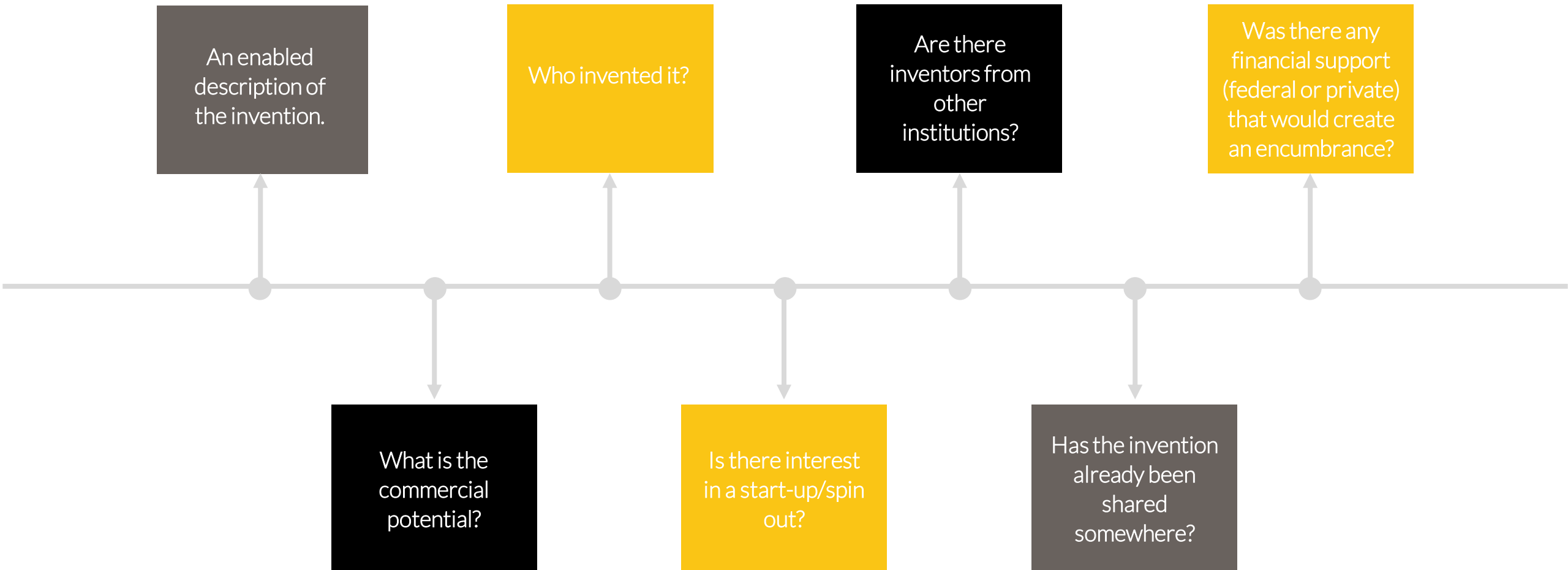
FINANCIAL VALUE



ECONOMIC VALUE

SOCIETAL VALUE

IP AT NORTHEASTERN BEGINS WITH A DISCLOSURE

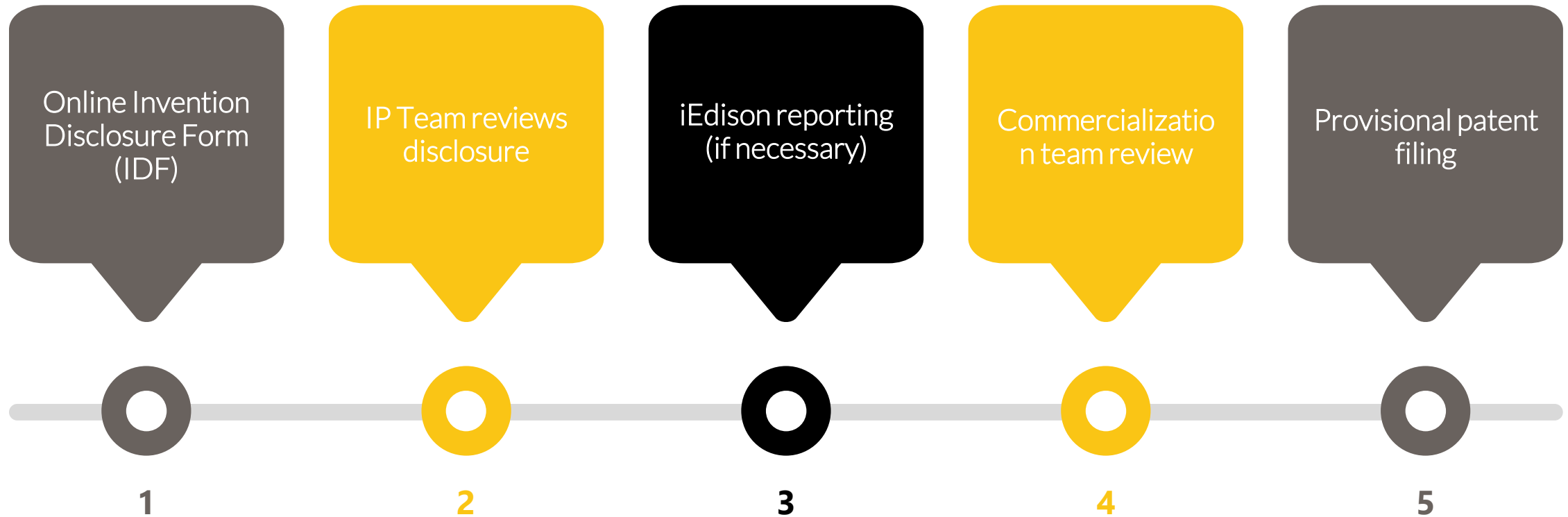


**Always...
ALWAYS
disclose to
CRI FIRST**

!!!



IDF TO PATENT TIMELINE



REPORTING TO THE FEDERAL GOVERNMENT IS A MUST
OTHERWISE, WE LOSE RIGHTS

THE PATENT LIFECYCLE



1

Provisionals give one year protection.

2

Do not undergo examination and are not published.

3

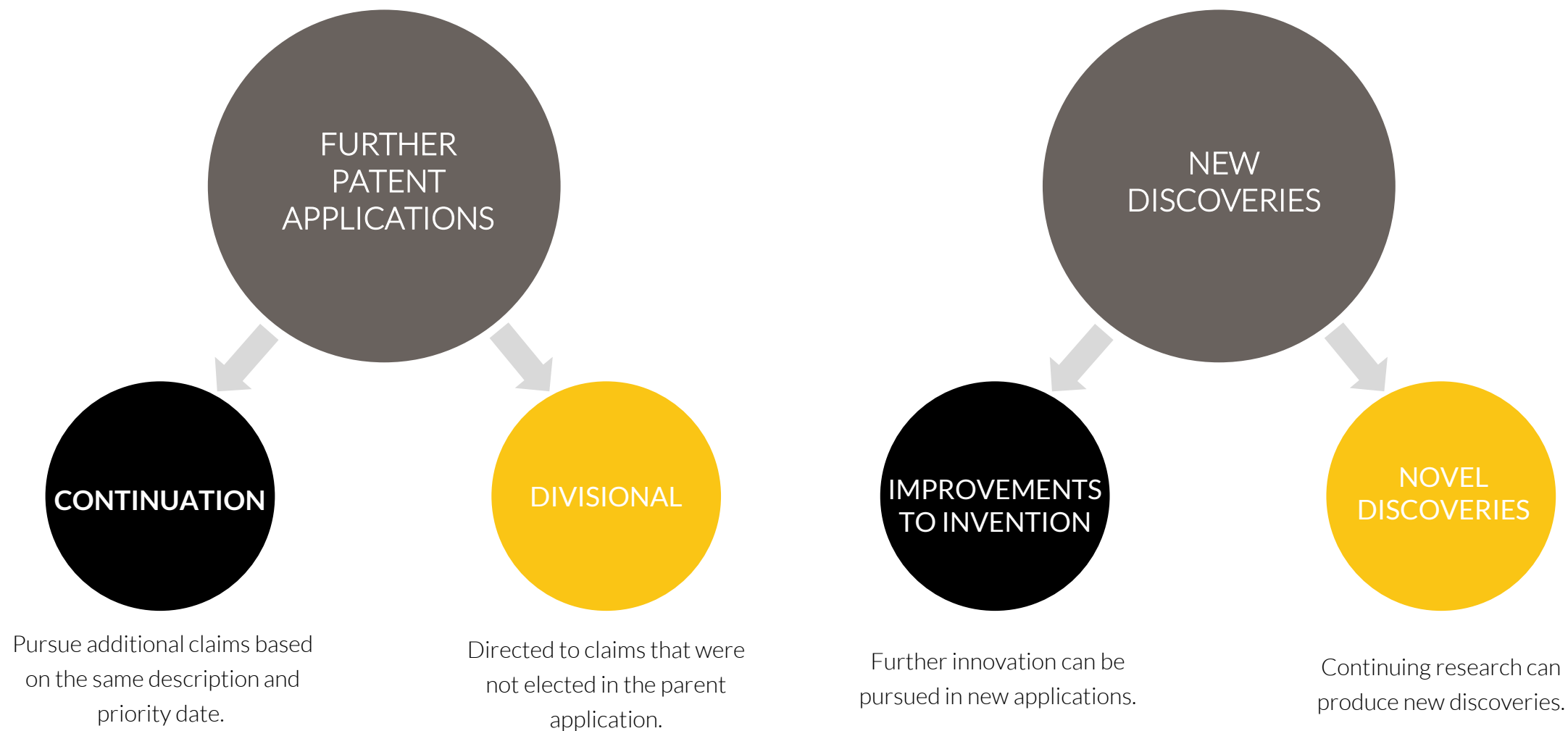
US is “first to file” not first to invent. The provisional establishes the “priority date” for patent protection.

4

At the end of the year, we can file a US or an international application.

Then...wait...

AN ISSUED PATENT IS NOT WHERE IT ALL ENDS



Q & A



SHIVANI ARYASOMAYAJULA

PROJECT CONSULTANT

s.aryasomayajula@northeastern.edu



MARK SAULICH

**ASSOCIATE DIRECTOR OF
COMMERCIALIZATION**

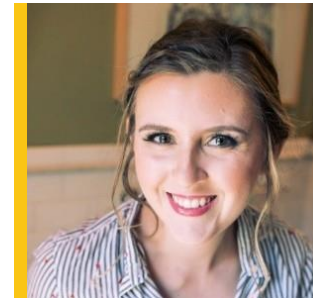
m.saulich@northeastern.edu



RHONDA KIVLIN

IP & COMPLIANCE MANAGER

r.kivlin@northeastern.edu



KATIE HEMPHILL

**DIRECTOR OF TECHNOLOGY VENTURES
& TALENT NETWORK**

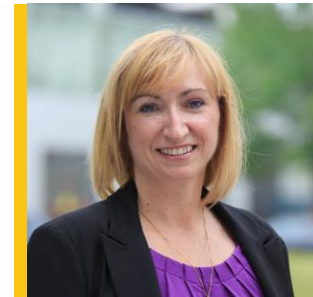
k.hemphill@northeastern.edu



NINA WILT

**ASSISTANT DIRECTOR IP &
CONTRACTS COUNCIL**

n.wilt@northeastern.edu



JENNIFER BOYLE-LYNCH

EXECUTIVE DIRECTOR

j.boyle-lynch@northeastern.edu